

Standard configuration

Engine

- Starter motor
- Alternator
- Air filter
- Dual-element air filter
- Cylinder-type engine oil filter
- Cylinder-type fuel oil filter
- Engine oil cooler
- Radiator with protective screening
- Radiator auxiliary water tank
- Fan aerofoil
- Fuel oil level float

Hydraulic system

- Fingertip-operating pilot
- Control valve with main overflow valve
- Control valve with spare oil port
- Oil suction filter
- Return oil filter
- Pilot filter
- Hydraulic oil level gauge

Working device

- Flange pin
- Welded connecting rod
- Lubricating system
- All bucket pins are equipped with dustproof seal ring
- Reinforced plate-type boom
- Reinforced plate -type swing arm
- Gear-holder gear-sleeve type wear-resisting bucket tooth

Instruments of monitoring system

- Fuel tank oil level gauge
- Engine coolant temperature gauge
- Intelligent instrument of CAN line function

Cab

- Sound-proof steel-structure cab
- Reinforced light-color glass window
- 4 silicone oil rubber damper supports
- Openable right side window
- Emergency exit on right door
- Wiper with washer
- Adjustable tilting seat with adjustable armrest
- AM-FM radio with digital clock
- Floor mat
- Loudspeaker and rearview mirror
- Seat belt and fire extinguisher
- Cup holder and compartment lamp
- Ashtray and escape hammer
- Storage box and sundries bag
- Dual-purpose air conditioner
- Sun shade

Alarm indication

- Engine oil pressure insufficient and engine coolant temperature too high
- Storage battery voltage insufficient
- Fuel oil volume insufficient
- Gearbox oil temperature high

Others

- Standard storage battery
- Lockable engine hood
- Lockable fuel filler cap
- Anti-slip pedal, armrest and sidewalk
- Tool kit

Drive system

- Intermediate support of heavy-duty drive shaft
- K/D shifting lever
- Spindle-type gearbox
- Full-hydraulic traveling brake
- Rear driving axle of swinging structure
- Electro-hydraulic shifting solenoid valve



SYL956H5

Wheeled loader

Subverting Fully BRAND NEW H5

EFFICIENT AND VALUE ADDING

Leading Innovation Splendid SANY

- Rated power 164KW/2200rpm
- Total weight 17100±200kg
- Bucket capacity 2.7~4m³
- Rated loading capacity 5000kg



Shanghai SANY Heavy Machinery Co., Ltd.

Shanghai SANY Heavy Machinery Industrial Park, Ping'an Town, Fengxian District, Shanghai City, China

Post code: 201413

After-sales service hotline: 4008282318

Consulting & complaint hotline: 4008879318

www.sany.com.cn



Note

This is a sample and is only for reference. All configuration shall be subject to the contract or material object, and may be changed without further notice. All rights reserved. No contents in the sample shall be duplicated or copied for any purposes without written approval of SANY Heavy Machinery.

Printed in China

No. ZJ5X0604CH (March 2016)

SYL956H5

Efficiency Leader Value Model

New-generation heavy-duty wheeled loader

Selling Points

SYL956H5 is a kind of long wheelbase 5T heavy-duty loader product produced by SANY Heavy Machinery. It is designed for heavy-duty working conditions and targets to improve investment return of the customer. As compared with competitor brands, it has the advantages of "high efficiency, high comfort, high economy and high reliability".



High efficiency



High comfort



High economy



High reliability



High efficiency

○ Engine

Fully upgraded Cummins engine

By working with SANY jointly, high power, large displacement, efficient QSL8.9 electronic injection high pressure common rail engine is customized according to the needs of SANY.

- Multi-point injection, high response speed of throttle at various engine speed, more efficient power output, better fuel economy and lower noise.
- With exhaust gas bypass type turbocharger, turbocharging would be smoother at low engine speed and power output would be more stable at high engine speed.
- Meet emission requirements of national III standard.



ENGINE

○ Gearbox

Advanced DANA spindle-type gearbox

Heavy-duty classic DANA spindle-type gearbox is customized according to the needs of SANY and far surpasses latest high technology of planetary gearbox.

- With excellent controllability, and self-adaptive regulation function, the operating efficiency is improved greatly.
- With F/R handle operation and fingertip operation, the operations of left and right hands may be switched freely.
- With solenoid valve+ logic control, the gear shifting is smoother and the response speed is higher.



GEARBOX

○ Hydraulic system

Efficient fixed/variable displacement interflow high pressure hydraulic system

With domestically leading load-sensitive fixed/variable displacement interflow high pressure hydraulic system, the speed reaches optimal match with the power, operating efficiency is improved, the speed is higher and the digging force is bigger.

- 25MPa high pressure hydraulic system matches with high-flow main valve. As compared with domestic 16-18MPa low pressure system, the pressure loss is less, and digging force and lifting force are larger.
- With efficient variable displacement piston pump, the efficiency is much higher than gear pump.
- The flows of double pumps are combined, and distributed according to needs to realize higher lifting speed

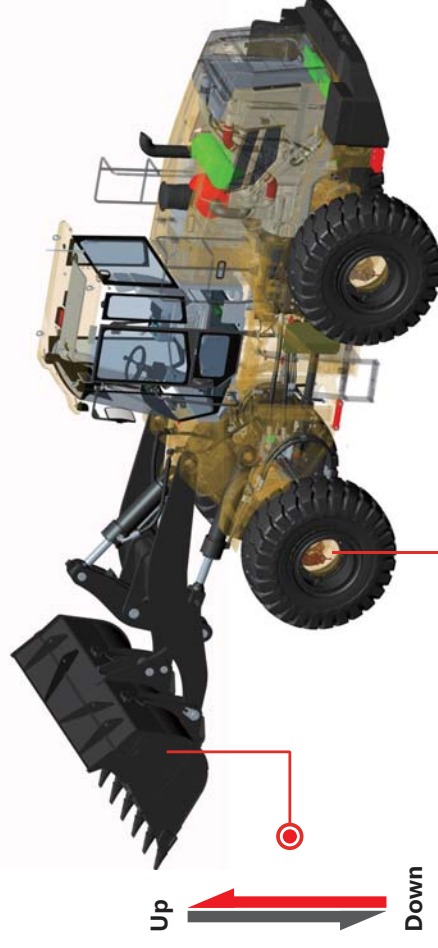


HYDRAULIC SYSTEM

○ Innovation and Matching

Optimal system matching

By innovation and matching of power, drive and hydraulic systems, and with core components from world famous brands like Cummins and DANA etc, optimal speed and power matching is realized. Through comparison and testing, operating efficiency is improved by over 11%.



High comfort

o Cab

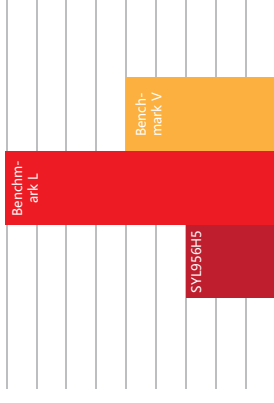
Super large space and super low noise

With panoramic ultra-silence cab, the space is large and the view is wide.

- As compared with other domestic models, internal space of the cab is increased by over 15%.
- With excellent sealing performance, the noise is blocked, and the dust is kept away. Noise level only is 78 dB(A).



Panoramic cab



Noise in the cab

o Pilot system

Sensitive and comfortable fingertip operation pilot system

With fingertip operating system introduced for the first time in China, operating force and operating stroke are smaller, and the operation is within control. It represents excellent sensitivity and comfort.

- Smaller control force and control stroke.
- With electromagnetic positioning, the efficient is higher.
- With dustproof design, the reliability is higher.



o Gearbox

Smooth shifting operation

Electrically controlled shifting gearbox matches with KD gear shifting function to realize stable shifting.

- With solenoid valve+ logic control, the gear shifting is smoother and the response speed is higher.
- KD function may realize shifting between forward gear I and reverse gear II easily, and may judge automatically according to vehicle speed to realize gear shifting, which significantly mitigates work intensity of the driver
- Electronically-controlled gear shifting make complete machine more stable and the driving more comfortable in the process of shifting gears.

o Cab

More humanized driving experience

Panoramic cab meeting human engineering requirement makes the driving more comfortable



Large-size full-protection soft wrist rest



- With 9° adjustable suspended seat, super large forward/backward adjusting space; the backrest may be adjusted at maximum angle
- Automatic withdrawing seatbelt retractor



Clear space for leg
Pedal arrangement with optimal operating comfort
Steering column with adjustable angle



Super large rear storage space

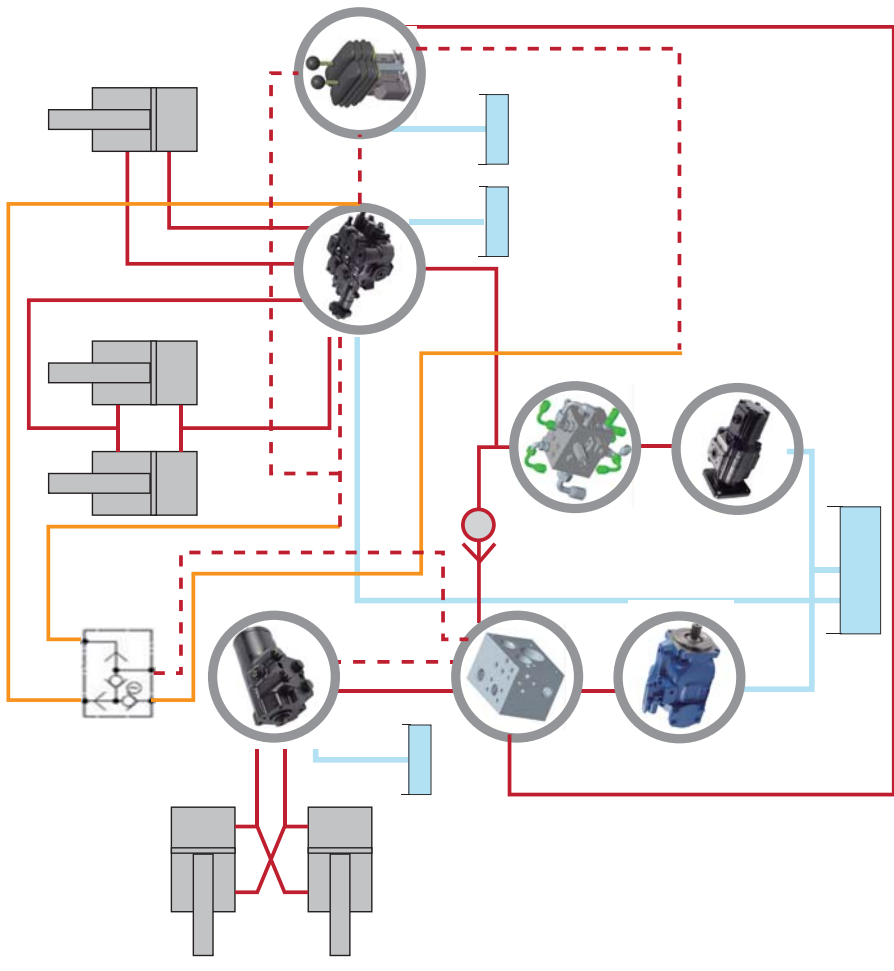
High economy

o Hydraulic system

Energy-saving efficient variable displacement interflow high-pressure hydraulic system

High pressure load-sensitive fixed/variable displacement hydraulic system matches with hydraulic components of famous brands to realize distribution of load according to the needs, and reduce unnecessary energy loss. It saves energy by over 10%.

- It is equipped with efficient variable displacement piston pump. As compared with traditional gear pump, the volume efficiency is higher and the performance is more stable.
- Flows of double pump are combined and distributed according to needs to reduce energy loss.
- With optimized pipeline layout, energy loss arisen from pressure loss is mitigated.

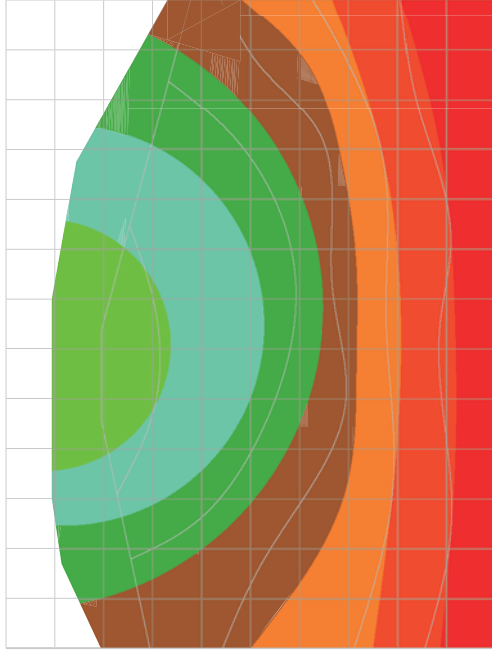


o Engine

Lower fuel consumption

Cummins high displacement QS18.9 engine adopts high pressure common rail and electronic injection technology to realize lower fuel consumption.

- High pressure common rail fuel system may produce perfect fuel supply rule so that engine power performance, emission and economy will be improved obviously.
- Through tests and comparison, specific fuel consumption at various engine speeds is better than benchmarking engine.



High economy

o Lower use cost

Lower use cost

By optimizing the matching of power, steering and hydraulic systems, SYL956H5 improves the speed and power, reduces fuel consumption and realizes excellent fuel economy. Through comparison and testing under same heavy-duty working condition, the operating efficiency is improved by over 11%, and comprehensive fuel consumption is reduced by 7%.

Reduce fuel consumption



Improve power



o Higher fuel economy

Guaranteed value increase; the value will increase immediately after purchase

A warranty period of 1 year and a half (or 3,000h) is exercised initially in the industry! The appreciation in asset value of the machine is improved significantly!

Half a year \geq RMB 10,000

The value will increase immediately after purchase

Rely on high reliability and long life of top-end components from Cummins and DANA etc.

Powerful support for heavy-duty structural member of reinforced design of 10,000h service life

Super long three-warranty period SYL956H5 as compared with other brands in the industry
(Half a year \geq RMB 10,000)

